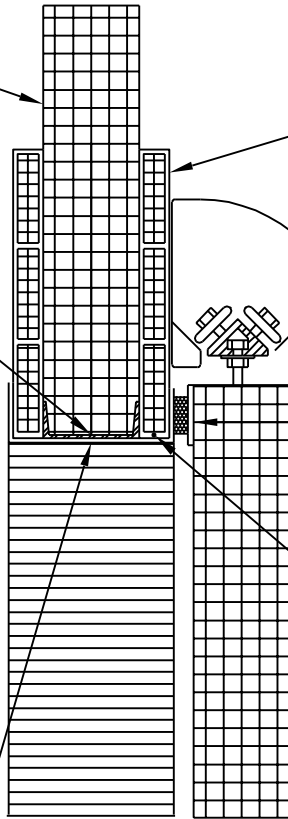


COLD STORAGE ROOM  
WALL PANEL

STEEL CHANNEL WITH ANCHORS  
AT HEAD AND JAMBS OF DOOR  
OPENING FOAMED IN PLACE WITH  
INSULATION (C4x5.4 AT COOLER  
C5x6.7 AT FREEZER)

STAINLESS STEEL JAMB/HEAD  
WRAP - FURNISH AS PART OF  
COLD STORAGE ROOM - MITER OR  
OVERLAP JAMB/HEAD WRAPS AT  
CORNERS TO PROVIDE OUTSIDE  
SQUARE CORNERS

2 1/2"  
DOOR OPENING  
SEE SCHEDULE



INSULATED WHITE EXTRUDED  
ALUMINUM CASING FRAME ON  
BOTH SIDES OF WALL AND OF  
DIMENSION REQUIRED FOR  
PROPER SUPPORT OF DOOR

DROP TRACK GUIDE SYSTEM WITH  
COVER

SANTOPRENE GASKETING IN  
1/4" X 2 1/2" EXTRUDED ALUMINUM  
MOLDING AT HEAD AND JAMBS

THREE SIDED, 120 VOLT HEATER IN  
FRONT CASING ON FREEZER DOOR,  
FURNISHED AS PART OF DOOR  
ASSEMBLY.

SLIDING COOLER / FREEZER DOOR

# HEAD

1 1/2" = 1'-0"

DATE	DEFENSE COMMISSARY AGENCY DIRECTORATE OF ENGINEERING FORT LEE, VIRGINIA - LACKLAND AFB, TEXAS		DESIGN STANDARD
JUN 2022	TITLE	COLD STORAGE ROOMS SLIDING ENTRANCE DOOR HEAD	132126-16
		REF.	
		REV.	